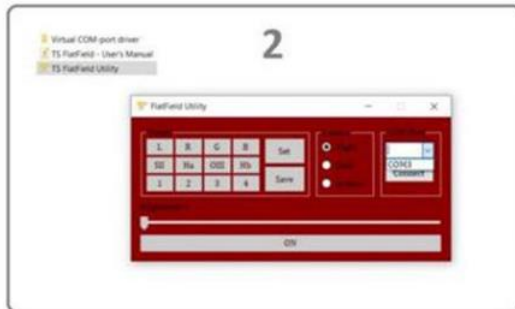


PC connection (for Windows)

1. Connect the supplied USB drive to your computer. Install the virtual COM-port driver
2. Copy TS FlatField Utility application to your computer. Connect the device to a PC using a USB cable without connecting power to the panel. Launch TS FlatField Utility application and select the appropriate COM-port
3. Click the **Connect** button. The application will load the controller settings and after that you can connect power to the FlatField panel and adjust the brightness level using the slider in the application window.



Using TS FlatField Utility

In the **Colour** block you can choose one of three skins for the application window

